

RESOLUTION NO. 3641

**A RESOLUTION OF THE CITY COUNCIL OF THE CITY OF SOLEDAD
ORDERING THE LEVY AND COLLECTION OF ASSESSMENTS WITHIN THE
DIAMOND RIDGE PARKS AND OPEN SPACE MAINTENANCE ASSESSMENT
DISTRICT NO. 1 FOR FISCAL YEAR 2005/2006**

WHEREAS, the City Council has by previous Resolutions initiated proceedings and declared its intention to levy assessments for the Diamond Ridge Parks and Open Space Maintenance Assessment District No 1 (hereafter referred to as the "District") for the Fiscal Year commencing July 1, 2005 and ending June 30, 2006 pursuant to the provisions of the *Landscaping and Lighting Act of 1972, Part 2 of Division 15 of the California Streets and Highways Code, commencing with Section 22500* (hereafter referred to as the "Act") to pay the costs and expenses of operating, maintaining, and servicing improvements and facilities located within the boundaries of the District; and

WHEREAS, the Engineer selected by the Council has prepared and filed with the City Clerk, and the City Clerk has presented to the Council, the Engineer's Annual Levy Report (hereafter referred to as the "Report") for the District that describes the District and the proposed levy and collection of assessments upon eligible parcels of land within the District, and the Council did by previous Resolution approve such Report; and

WHEREAS, the City Council desires to levy and collect assessments against parcels of land within the District for the Fiscal Year commencing July 1, 2005 and ending June 30, 2006 to pay the costs and expenses of operating, maintaining, and servicing improvements and facilities located within the boundaries of the District; and

WHEREAS, the City and its assessment consultant have reviewed the provisions of Section XIIIID of the California State Constitution and found that the proposed assessments comply with these provisions.

NOW, THEREFORE, BE IT HEREBY RESOLVED, DETERMINED, AND ORDERED BY THE CITY COUNCIL OF THE CITY OF SOLEDAD FOR THE DIAMOND RIDGE PARKS AND OPEN SPACES MAINTENANCE ASSESSMENT DISTRICT NO. 1 AS FOLLOWS:

Section 1 Following notice duly given, the City Council has held a full and fair Public Hearing regarding the District, the levy and collection of assessments, the Report prepared in connection therewith, and considered all oral and written statements, protests, and communications made or filed by interested persons regarding these matters.

Section 2 Based upon its review (and amendments, as applicable) of the Report, the City Council hereby finds and determines that:

- i) the land within the District will receive special benefit by the operation, maintenance, and servicing of improvements and facilities located within the boundaries of the District; and
- ii) the District includes all of the lands so benefited, and

iii) the net amount to be assessed upon the lands within the District in accordance with the fee for the Fiscal Year commencing July 1, 2005 and ending June 30, 2006 is apportioned by a formula and method which fairly distributes the net amount among all eligible parcels in proportion to the estimated benefits to be received by each parcel from the improvements and services.

Section 3 The Report and assessments as presented to the City Council and on file in the Office of the City Clerk are hereby confirmed as filed.

Section 4 The maintenance, operation, and servicing of the improvements and appurtenant facilities shall be performed pursuant to the Act. The City Council hereby orders the proposed improvements to be made, which improvements are briefly described as follows the maintenance and operation of street lights and any or all public landscaping and irrigation improvements of a local nature on landscaped strips of land adjacent to curbs of the following described streets, including jogging paths, planter walls, grass berms, appurtenant irrigation systems, ornamental plantings including lawns, shrubs, and trees, including necessary repairs, replacements, water, electric current, spraying, care, supervision, debris removal, and any and all other items of work necessary and incidental for the proper maintenance and operation thereof. The Report describes all new improvements or substantial changes in existing improvements.

Section 5 The County Auditor of the County of Monterey shall enter on the County Assessment Roll opposite each eligible parcel of land the amount of levy so apportioned by the formula and method outlined in the Report, and such levies shall be collected at the same time and in the same manner as the County taxes are collected pursuant to *Chapter 4, Article 2, Section 22646* of the Act. After collection by the County, the net amount of the levy shall be paid to the City Treasurer

Section 6 The City Treasurer shall deposit all money representing assessments collected by the County for the District to the credit of a fund known as the "Improvement Fund, City of Soledad, Diamond Ridge Parks and Open Space Maintenance Assessment District No 1 and such monies shall be expended only for the maintenance, operation, and servicing improvements and facilities as described in Section 4

Section 7 The adoption of this Resolution constitutes the District levy for the Fiscal Year commencing July 1, 2005 and ending June 30, 2006

Section 8 The City Clerk or their designate is hereby authorized and directed to file the levy with the County Auditor upon adoption of this Resolution pursuant to *Chapter 4, Article 1, Section 22641* of the Act.

PASSED AND ADOPTED at a regular meeting of the City Council of the City of Soledad duly held on 6th day of July, 2005 by the following vote:

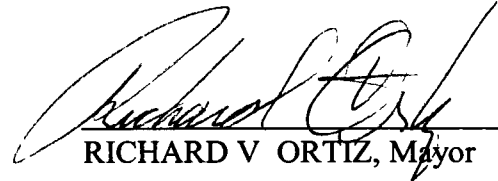
AYES, and in favor thereof, Councilmembers
Juan Saavedra, Mayor Richard Ortiz

Patricia Stephens, Mayor Pro Tem

NOES, Councilmembers. None


ABSTAINED, Councilmembers. None

ABSENT, Councilmembers. Christopher Bourke, Stefanie De La Rosa



RICHARD V. ORTIZ, Mayor

ATTEST



NOELIA F. CHAPA, City Clerk

**CITY OF SOLEDAD
ENGINEER'S FINAL ANNUAL
LEVY REPORT**

**Diamond Ridge Parks and Open Space
Maintenance Assessment District No. 1
(Miravale, Phase I)
Fiscal Year 2005/2006**



MuniFinancial

Corporate Office.

27368 Via Industria
Suite 110
Temecula, CA 92590
Tel (951) 587-3500
Tel (800) 755-MUNI (6864)
Fax:(951) 587-3510

Office Locations:

Anaheim, CA
Lancaster, CA
Los Angeles Regional Office
Oakland, CA

Phoenix, AZ
Sacramento, CA
Seattle, WA

[www muni.com](http://www.muni.com)

**ENGINEER'S REPORT AFFIDAVIT
Diamond Ridge Parks and Open Space
Maintenance Assessment District No. 1
(Miravale, Phase I)**

City of Soledad
Monterey County, State of California

This Report describes the District including the improvements, budgets, parcels and assessments to be levied for Fiscal Year 2005/2006 as they existed at the time of the passage of the Resolution of Intention. Reference is hereby made to the Monterey County Assessor's maps for a detailed description of the lines and dimensions of parcels within the District. The undersigned respectfully submits the enclosed Report as directed by the City Council.

Dated this 17th day of May, 2005

MuniFinancial
Assessment Engineer
On Behalf of the City of Soledad

By: Bill Moses

Bill Moses
District Administration Services

By: [Signature]

John F. Knipe, P.E.
R. C. E. #27088



CITY CLERK'S CERTIFICATE
Diamond Ridge Parks and Open Space
Maintenance Assessment District No. 1
(Miravale, Phase I)

City of Soledad
Monterey County, State of California

I HEREBY CERTIFY that the enclosed Engineer's Report, together with the Assessment Diagram thereto attached, was filed with me on the 23rd day of May, 2005

NOELIA F CHAPA, City Clerk
City of Soledad, Monterey County, California

By: _____

Noelia A. Chapa

I HEREBY CERTIFY that the enclosed Engineer's Report, together with the Assessment Diagram thereto attached, was approved and confirmed by the City Council of the City of Soledad, California, on the 6th day of July, 2005

NOELIA F CHAPA, City Clerk
City of Soledad, Monterey County, California

By: _____

Noelia A. Chapa

I HEREBY CERTIFY THAT THE ENCLOSED Engineer's Report, together with the Assessment Diagram thereto attached, was filed with the County Auditor of the County of Monterey on the 12th day of July, 2005

NOELIA F CHAPA, City Clerk
City of Soledad, Monterey County, California

By: _____

Noelia A. Chapa

ENGINEER'S REPORT
Diamond Ridge Parks and Open Space
Maintenance Assessment District No. 1
(Miravale, Phase I)

TABLE OF CONTENTS

I	DESCRIPTION OF WORK.. .. .	5
II.	2005/2006 BUDGET ESTIMATES.. .. .	7
III	2005/2006 ASSESSMENT ROLL	8
IV	METHOD OF APPORTIONMENT	15
IV.	DISTRICT DIAGRAM	18

DESCRIPTION OF WORK
Diamond Ridge Parks and Open Space
Maintenance Assessment District No. 1
(Miravale, Phase I)

DIAMOND RIDGE PARKS AND OPEN SPACES MAINTENANCE ASSESSMENT DISTRICT NO. 1 is generally described as a district bounded on the north by the northerly boundary of Miravale, Phase I Tract Map, on the south by Gabilan Drive, on the east by Orchard Lane and on the west by Toledo Street.

Maintenance and operation of street lights and any or all public landscaping and irrigation improvements of a local nature on landscaped strips of land adjacent to curbs of the following described streets, including jogging paths, planter walls, grass berms, appurtenant irrigation systems, ornamental plantings including lawns, shrubs, and trees; including necessary repairs, replacements, water, electric current, spraying, care, supervision, debris removal, and any and all other items of work necessary and incidental for the proper maintenance and operation thereof. Maintenance and operation also includes all additions, improvements and enlargements thereto which may hereafter be made on the previously described work:

Maintenance and operations as described above are for the improvements located on the following streets.

Gabilan Drive and Orchard Lane Landscaping, is located in a strip of land varying in width from face of curb lines, including planter walls, within Parcel "B" along the north side of Gabilan Drive from Toledo Street to Orchard Lane; along the east and west sides of Orchard Lane from Gabilan Drive to the north limit of Miravale, Phase I Tract Map

Street Lights within Miravale, Phase I Subdivision.

Maintenance and operation of any and all public landscaping and irrigation improvements, of a local nature, on landscaped strips of land adjacent to the following described areas, including retention pond, appurtenant irrigation systems; ornamental plantings including lawns, shrubs and trees, including necessary repairs, replacements, water, electric current, spraying, care, supervision, debris removal, and any and all other items of work necessary and incidental for the proper maintenance and operation thereof. Maintenance and operation also includes all additions, improvements and enlargements thereto which may hereafter be made on the previously described work:

Park Parcel “A” including Storm Water Retention Pond and Parcel “C” “Pocket Park” and appurtenant access and irrigation as said parcel as shown on the approved improvement plans titled, “Miravale, Phase I” and the approved tentative map

2005/2006 BUDGET ESTIMATES
Diamond Ridge Parks and Open Space
Maintenance Assessment District No. 1
(Miravale, Phase I)

Expenditure Items	2005/06 Budget
Park/Street/Percolation Pond/Landscape Maintenance	\$50,000 00
Street Landscape Water Charges	2,000 00
Park/Landscape Water Charges	4,000 00
Park/Landscape Electrical Charges	2,000 00
Planter Wall Maintenance	6,000 00
Sound Wall Reserve (Replacement & Painting - \$15K every 5 yrs.)	3,000 00
Street Lighting Electrical & Replacement	3,000 00
Reserve Collection / (Transfer)	8,367 64
Total Direct Expenses	\$78,367.64
City Administration (6%)	4,200 00
District Administration	6,000 00
Printing & Advertising	1,000 00
Collection Fees	5,205 00
Total Administration Expenses	\$16,405.00
TOTAL OF EXPENSES	\$94,772.64
Beginning Reserve Balance	\$5,733 54
Reserve Fund Activity	8,367 64
Estimated Ending Reserve Balance	\$14,101 18

2005/2006 ASSESSMENT ROLL
Diamond Ridge Parks and Open Space
Maintenance Assessment District No. 1
(Miravale, Phase I)

ASSESSMENT NUMBER	ASSESSOR'S PARCEL NO	ASSESSMENT UNITS	ASSESSMENT 2005/2006	COLLECTION FEE	TOTAL LEVY
1	022-442-001	1	\$258 12	\$15.00	\$273 12
2	022-442-002	1	258 12	15 00	273 12
3	022-442-003	1	258 12	15 00	273 12
4	022-442-004	1	258 12	15.00	273.12
5	022-442-005	1	258 12	15.00	273.12
6	022-442-006	1	258.12	15.00	273.12
7	022-442-007	1	258 12	15.00	273 12
8	022-442-008	1	258 12	15.00	273 12
9	022-442-009	1	258.12	15.00	273.12
10	022-442-010	1	258 12	15.00	273.12
11	022-442-011	1	258 12	15.00	273 12
12	022-442-012	1	258.12	15.00	273.12
13	022-442-013	1	258 12	15.00	273.12
14	022-442-014	1	258 12	15.00	273 12
15	022-442-015	1	258 12	15.00	273 12
16	022-442-016	1	258.12	15.00	273.12
17	022-442-017	1	258.12	15.00	273.12
18	022-442-018	1	258 12	15.00	273 12
19	022-442-019	1	258.12	15.00	273 12
20	022-442-020	1	258 12	15.00	273.12
21	022-442-021	1	258 12	15.00	273.12
22	022-442-022	1	258.12	15.00	273.12
23	022-442-023	1	258.12	15.00	273 12
24	022-442-024	1	258 12	15.00	273.12
25	022-442-025	1	258.12	15.00	273.12
26	022-442-026	1	258 12	15.00	273 12
27	022-442-027	1	258 12	15.00	273 12
28	022-442-028	1	258.12	15.00	273 12
29	022-442-029	1	258.12	15.00	273.12
30	022-442-030	1	258 12	15.00	273.12
31	022-442-031	1	258 12	15.00	273.12
32	022-442-032	1	258.12	15.00	273 12
33	022-442-033	1	258.12	15.00	273 12
34	022-442-034	1	258 12	15.00	273.12
35	022-442-035	1	258 12	15.00	273.12
36	022-442-036	1	258.12	15.00	273 12
37	022-442-037	1	258 12	15.00	273.12
38	022-442-038	1	258.12	15.00	273 12
39	022-442-039	1	258 12	15 00	273 12
40	022-442-040	1	258 12	15.00	273.12
41	022-442-041	1	258.12	15.00	273 12
42	022-442-042	1	258.12	15.00	273 12
43	022-442-043	1	258 12	15.00	273 12
44	022-442-044	1	258.12	15.00	273.12
45	022-442-045	1	258.12	15.00	273 12
46	022-442-046	1	258 12	15 00	273 12

ASSESSMENT NUMBER	ASSESSOR'S PARCEL NO	ASSESSMENT UNITS	ASSESSMENT 2005/2006	COLLECTION FEE	TOTAL LEVY
47	022-442-047	1	258.12	15.00	273 12
48	022-442-048	1	258.12	15.00	273 12
49	022-442-049	1	258 12	15.00	273 12
50	022-442-050	1	258.12	15.00	273 12
51	022-442-051	1	258 12	15.00	273.12
52	022-442-052	1	258 12	15.00	273 12
53	022-442-053	1	258 12	15.00	273 12
54	022-442-054	1	258.12	15.00	273 12
55	022-442-055	1	258 12	15.00	273 12
56	022-442-056	1	258 12	15.00	273.12
57	022-442-057	1	258.12	15.00	273.12
58	022-442-058	1	258.12	15.00	273 12
59	022-442-059	1	258 12	15.00	273 12
60	022-442-060	1	258.12	15.00	273 12
61	022-442-061	1	258 12	15.00	273.12
62	022-442-062	1	258 12	15.00	273.12
63	022-442-063	1	258 12	15.00	273 12
64	022-442-064	1	258 12	15.00	273.12
65	022-442-065	1	258.12	15.00	273.12
66	022-442-066	1	258.12	15.00	273 12
67	022-442-067	1	258 12	15.00	273.12
68	022-442-068	1	258.12	15.00	273.12
69	022-442-069	1	258 12	15.00	273.12
70	022-442-070	1	258 12	15.00	273.12
71	022-442-071	1	258 12	15.00	273.12
72	022-442-072	1	258.12	15.00	273.12
73	022-442-073	1	258.12	15.00	273.12
74	022-442-074	1	258.12	15.00	273 12
75	022-442-075	1	258.12	15.00	273 12
76	022-442-076	1	258.12	15.00	273.12
77	022-442-077	1	258 12	15.00	273 12
78	022-442-078	1	258.12	15.00	273 12
79	022-442-079	1	258 12	15.00	273 12
80	022-442-080	1	258 12	15.00	273 12
81	022-442-081	1	258.12	15.00	273 12
82	022-442-082	1	258.12	15.00	273 12
83	022-442-083	1	258.12	15.00	273 12
84	022-442-084	1	258 12	15.00	273.12
85	022-442-085	1	258 12	15.00	273 12
86	022-442-086	1	258 12	15.00	273 12
87	022-442-087	1	258.12	15.00	273.12
88	022-442-088	1	258.12	15.00	273 12
89	022-442-089	1	258.12	15.00	273 12
90	022-442-090	1	258.12	15.00	273 12
91	022-442-091	1	258.12	15.00	273 12
92	022-442-092	1	258 12	15.00	273 12
93	022-442-093	1	258 12	15.00	273 12
94	022-442-094	1	258.12	15.00	273 12
95	022-442-095	1	258.12	15.00	273 12
96	022-442-096	1	258 12	15 00	273.12
97	022-442-097	1	258.12	15.00	273 12
98	022-442-098	1	258 12	15.00	273 12
99-1	022-481-001	1	258 12	15.00	273.12
99-2	022-481-002	1	258 12	15 00	273 12
99-3	022-481-003	1	258 12	15 00	273.12
99-4	022-481-004	1	258.12	15.00	273 12

ASSESSMENT NUMBER	ASSESSOR'S PARCEL NO	ASSESSMENT UNITS	ASSESSMENT 2005/2006	COLLECTION FEE	TOTAL LEVY
99-5	022-481-005	1	258 12	15.00	273 12
99-6	022-481-006	1	258.12	15 00	273 12
99-7	022-481-007	1	258 12	15.00	273 12
99-8	022-481-008	1	258.12	15 00	273 12
99-9	022-481-009	1	258 12	15 00	273 12
99-10	022-481-010	1	258 12	15 00	273 12
99-11	022-481-011	1	258.12	15.00	273 12
99-12	022-481-012	1	258.12	15 00	273 12
99-13	022-481-013	1	258.12	15 00	273 12
99-14	022-481-014	1	258 12	15 00	273 12
99-15	022-481-015	1	258.12	15.00	273.12
99-16	022-481-016	1	258 12	15 00	273 12
99-17	022-481-017	1	258.12	15.00	273 12
99-18	022-481-018	1	258.12	15 00	273.12
99-19	022-481-019	1	258 12	15.00	273 12
99-20	022-481-020	1	258 12	15 00	273.12
99-21	022-481-021	1	258 12	15.00	273 12
99-22	022-481-022	1	258.12	15.00	273 12
99-23	022-481-023	1	258 12	15.00	273.12
99-24	022-481-024	1	258.12	15.00	273 12
99-25	022-481-025	1	258.12	15 00	273 12
99-26	022-481-026	1	258.12	15.00	273 12
99-27	022-481-027	1	258 12	15.00	273 12
99-28	022-481-028	1	258.12	15.00	273 12
99-29	022-481-029	1	258.12	15.00	273.12
99-30	022-481-030	1	258.12	15.00	273 12
99-31	022-481-031	1	258.12	15.00	273 12
99-32	022-481-032	1	258.12	15.00	273 12
99-33	022-481-033	1	258 12	15.00	273.12
99-34	022-481-034	1	258.12	15.00	273 12
99-35	022-481-035	1	258 12	15.00	273.12
99-36	022-481-036	1	258.12	15.00	273.12
99-37	022-481-037	1	258 12	15.00	273 12
99-38	022-481-038	1	258.12	15.00	273 12
99-39	022-481-039	1	258 12	15.00	273 12
99-40	022-481-040	1	258 12	15.00	273.12
99-41	022-481-041	1	258.12	15.00	273 12
99-42	022-481-042	1	258.12	15 00	273 12
99-43	022-481-043	1	258 12	15 00	273 12
99-44	022-481-044	1	258 12	15.00	273.12
99-45	022-481-045	1	258 12	15 00	273 12
99-46	022-481-046	1	258.12	15.00	273 12
99-47	022-481-047	1	258.12	15.00	273.12
99-48	022-481-048	1	258.12	15.00	273 12
99-49	022-481-049	1	258 12	15.00	273.12
99-50	022-481-050	1	258 12	15.00	273 12
99-51	022-481-051	1	258.12	15.00	273.12
99-52	022-481-052	1	258 12	15.00	273 12
99-53	022-481-053	1	258.12	15 00	273 12
99-54	022-481-054	1	258.12	15 00	273 12
99-55	022-481-055	1	258.12	15.00	273.12
99-56	022-481-056	1	258 12	15.00	273 12
99-57	022-481-057	1	258 12	15 00	273 12
99-58	022-481-058	1	258 12	15.00	273 12

ASSESSMENT NUMBER	ASSESSOR'S PARCEL NO	ASSESSMENT UNITS	ASSESSMENT 2005/2006	COLLECTION FEE	TOTAL LEVY
99-59	022-481-059	1	258 12	15.00	273 12
99-60	022-481-060	1	258 12	15.00	273 12
99-61	022-481-061	1	258 12	15.00	273 12
99-62	022-481-062	1	258 12	15.00	273 12
99-63	022-481-063	1	258.12	15.00	273 12
99-64	022-481-064	1	258 12	15 00	273.12
99-65	022-481-065	1	258 12	15.00	273.12
99-66	022-481-066	1	258 12	15.00	273.12
99-67	022-481-067	1	258 12	15.00	273.12
99-68	022-481-068	1	258 12	15.00	273 12
99-69	022-481-069	1	258 12	15 00	273 12
99-70	022-481-070	1	258 12	15.00	273 12
99-71	022-481-071	1	258.12	15 00	273 12
99-72	022-481-072	1	258 12	15.00	273.12
99-73	022-481-073	1	258.12	15.00	273 12
99-74	022-481-074	1	258 12	15.00	273.12
99-75	022-481-075	1	258.12	15.00	273.12
99-76	022-481-076	1	258.12	15.00	273 12
99-77	022-481-077	1	258 12	15.00	273.12
99-78	022-481-078	1	258 12	15.00	273.12
99-79	022-481-079	1	258.12	15.00	273.12
99-80	022-481-080	1	258 12	15.00	273.12
99-81	022-481-081	1	258.12	15.00	273.12
99-82	022-481-082	1	258 12	15.00	273.12
99-83	022-481-083	1	258 12	15.00	273.12
99-84	022-481-084	1	258 12	15.00	273.12
99-85	022-481-085	1	258 12	15.00	273 12
99-86	022-481-086	1	258.12	15.00	273.12
99-87	022-481-087	1	258.12	15 00	273.12
99-88	022-481-088	1	258 12	15.00	273 12
99-89	022-481-089	1	258.12	15.00	273.12
99-90	022-481-090	1	258 12	15.00	273.12
99-91	022-482-001	1	258.12	15.00	273.12
99-92	022-482-002	1	258 12	15.00	273.12
99-93	022-482-014	1	258 12	15.00	273.12
99-94	022-482-015	1	258 12	15.00	273.12
99-95	022-482-016	1	258 12	15.00	273.12
99-96	022-482-017	1	258 12	15.00	273.12
99-97	022-482-018	1	258 12	15.00	273.12
99-98	022-482-019	1	258 12	15.00	273 12
99-99	022-482-020	1	258.12	15.00	273 12
99-100	022-482-021	1	258 12	15 00	273 12
99-101	022-482-022	1	258.12	15.00	273.12
99-102	022-482-023	1	258 12	15.00	273 12
99-103	022-482-024	1	258.12	15.00	273 12
99-104	022-482-025	1	258 12	15.00	273.12
99-105	022-482-026	1	258 12	15.00	273.12
99-106	022-482-027	1	258 12	15.00	273 12
99-107	022-482-028	1	258 12	15.00	273 12
99-108	022-482-029	1	258 12	15 00	273 12
99-109	022-482-030	1	258 12	15.00	273.12
99-110	022-482-031	1	258 12	15.00	273 12
99-111	022-482-032	1	258 12	15.00	273 12
99-112	022-482-033	1	258 12	15.00	273 12

ASSESSMENT NUMBER	ASSESSOR'S PARCEL NO	ASSESSMENT UNITS	ASSESSMENT 2005/2006	COLLECTION FEE	TOTAL LEVY
99-113	022-482-034	1	258.12	15.00	273.12
99-185	022-482-036	1	258.12	15.00	273.12
99-186	022-482-037	1	258.12	15.00	273.12
99-187	022-482-038	1	258.12	15.00	273.12
99-188	022-482-039	1	258.12	15.00	273.12
99-189	022-482-040	1	258.12	15.00	273.12
99-190	022-482-041	1	258.12	15.00	273.12
99-191	022-482-042	1	258.12	15.00	273.12
99-192	022-482-043	1	258.12	15.00	273.12
99-193	022-482-044	1	258.12	15.00	273.12
99-194	022-482-045	1	258.12	15.00	273.12
99-195	022-482-046	1	258.12	15.00	273.12
99-196	022-482-047	1	258.12	15.00	273.12
99-197	022-482-048	1	258.12	15.00	273.12
99-198	022-482-049	1	258.12	15.00	273.12
99-199	022-482-050	1	258.12	15.00	273.12
99-200	022-482-051	1	258.12	15.00	273.12
99-201	022-482-052	1	258.12	15.00	273.12
99-202	022-482-053	1	258.12	15.00	273.12
99-203	022-482-054	1	258.12	15.00	273.12
99-204	022-482-055	1	258.12	15.00	273.12
99-205	022-482-056	1	258.12	15.00	273.12
99-206	022-482-057	1	258.12	15.00	273.12
99-207	022-482-058	1	258.12	15.00	273.12
99-208	022-482-059	1	258.12	15.00	273.12
99-209	022-482-060	1	258.12	15.00	273.12
99-210	022-482-061	1	258.12	15.00	273.12
99-211	022-482-062	1	258.12	15.00	273.12
99-212	022-482-063	1	258.12	15.00	273.12
99-213	022-482-064	1	258.12	15.00	273.12
99-214	022-482-065	1	258.12	15.00	273.12
99-215	022-482-066	1	258.12	15.00	273.12
99-216	022-482-067	1	258.12	15.00	273.12
99-217	022-482-068	1	258.12	15.00	273.12
99-218	022-482-069	1	258.12	15.00	273.12
99-219	022-482-070	1	258.12	15.00	273.12
99-220	022-482-071	1	258.12	15.00	273.12
99-221	022-482-072	1	258.12	15.00	273.12
99-222	022-482-073	1	258.12	15.00	273.12
99-223	022-482-074	1	258.12	15.00	273.12
99-224	022-482-075	1	258.12	15.00	273.12
99-225	022-482-076	1	258.12	15.00	273.12
99-226	022-482-077	1	258.12	15.00	273.12
99-227	022-482-078	1	258.12	15.00	273.12
99-228	022-482-079	1	258.12	15.00	273.12
99-229	022-482-080	1	258.12	15.00	273.12
99-230	022-482-081	1	258.12	15.00	273.12
99-231	022-482-082	1	258.12	15.00	273.12
99-232	022-482-083	1	258.12	15.00	273.12
99-233	022-482-084	1	258.12	15.00	273.12
99-234	022-482-085	1	258.12	15.00	273.12
99-235	022-482-086	1	258.12	15.00	273.12
99-236	022-482-087	1	258.12	15.00	273.12
99-237	022-482-088	1	258.12	15.00	273.12

ASSESSMENT NUMBER	ASSESSOR'S PARCEL NO	ASSESSMENT UNITS	ASSESSMENT 2005/2006	COLLECTION FEE	TOTAL LEVY
99-238	022-482-089	1	258 12	15.00	273 12
99-239	022-482-090	1	258 12	15.00	273 12
99-240	022-482-091	1	258 12	15.00	273 12
99-241	022-482-092	1	258 12	15.00	273.12
99-242	022-482-093	1	258 12	15.00	273.12
99-243	022-482-094	1	258 12	15.00	273 12
99-244	022-482-095	1	258 12	15.00	273 12
99-245	022-482-096	1	258 12	15.00	273.12
99-246	022-482-097	1	258.12	15.00	273.12
99-247	022-482-098	1	258 12	15.00	273 12
99-248	022-482-099	1	258.12	15.00	273 12
99-249	022-482-100	1	258 12	15.00	273 12
99-114	022-483-001	1	258.12	15.00	273 12
99-115	022-483-002	1	258 12	15.00	273.12
99-116	022-483-003	1	258.12	15.00	273.12
99-117	022-483-004	1	258 12	15.00	273 12
99-118	022-483-005	1	258.12	15.00	273 12
99-119	022-483-006	1	258.12	15.00	273 12
99-120	022-483-007	1	258.12	15.00	273.12
99-121	022-483-008	1	258.12	15.00	273 12
99-122	022-483-009	1	258 12	15.00	273 12
99-123	022-483-010	1	258 12	15.00	273 12
99-124	022-483-011	1	258 12	15.00	273 12
99-125	022-483-012	1	258 12	15.00	273 12
99-126	022-483-013	1	258 12	15.00	273 12
99-127	022-483-014	1	258 12	15.00	273 12
99-128	022-483-015	1	258 12	15.00	273 12
99-129	022-483-016	1	258 12	15.00	273 12
99-130	022-483-017	1	258 12	15.00	273.12
99-131	022-483-018	1	258 12	15.00	273.12
99-132	022-483-019	1	258 12	15.00	273 12
99-133	022-483-020	1	258.12	15.00	273 12
99-134	022-483-021	1	258 12	15.00	273.12
99-135	022-483-022	1	258 12	15.00	273 12
99-136	022-483-023	1	258.12	15.00	273 12
99-137	022-483-024	1	258.12	15.00	273 12
99-138	022-483-025	1	258 12	15.00	273.12
99-139	022-483-026	1	258 12	15.00	273 12
99-140	022-483-027	1	258 12	15.00	273.12
99-141	022-483-028	1	258 12	15.00	273.12
99-142	022-483-029	1	258 12	15.00	273.12
99-143	022-483-030	1	258 12	15.00	273 12
99-144	022-483-031	1	258.12	15.00	273.12
99-145	022-483-032	1	258.12	15 00	273.12
99-146	022-483-033	1	258.12	15.00	273.12
99-147	022-483-034	1	258.12	15.00	273 12
99-148	022-483-035	1	258.12	15.00	273 12
99-149	022-483-036	1	258 12	15.00	273 12
99-150	022-483-037	1	258 12	15.00	273 12
99-151	022-483-038	1	258 12	15.00	273 12
99-152	022-483-039	1	258 12	15 00	273 12
99-153	022-483-040	1	258 12	15.00	273 12
99-154	022-483-041	1	258 12	15 00	273 12
99-155	022-483-042	1	258 12	15 00	273 12

ASSESSMENT NUMBER	ASSESSOR'S PARCEL NO	ASSESSMENT UNITS	ASSESSMENT 2005/2006	COLLECTION FEE	TOTAL LEVY
99-156	022-483-043	1	258 12	15 00	273 12
99-157	022-483-044	1	258 12	15.00	273 12
99-158	022-483-045	1	258 12	15.00	273 12
99-159	022-483-046	1	258 12	15 00	273 12
99-160	022-483-047	1	258 12	15.00	273.12
99-161	022-483-048	1	258 12	15.00	273 12
99-162	022-483-049	1	258 12	15.00	273 12
99-163	022-483-050	1	258 12	15.00	273 12
99-164	022-483-051	1	258 12	15.00	273 12
99-165	022-483-052	1	258 12	15 00	273.12
99-166	022-483-053	1	258 12	15.00	273 12
99-167	022-483-054	1	258 12	15.00	273 12
99-168	022-483-055	1	258 12	15.00	273 12
99-169	022-483-056	1	258.12	15.00	273 12
99-170	022-483-057	1	258 12	15.00	273 12
99-171	022-483-058	1	258 12	15.00	273.12
99-172	022-483-059	1	258.12	15.00	273.12
99-173	022-483-060	1	258.12	15.00	273 12
99-174	022-483-061	1	258.12	15.00	273.12
99-175	022-483-062	1	258 12	15.00	273 12
99-176	022-483-063	1	258 12	15.00	273 12
99-177	022-483-064	1	258.12	15.00	273 12
99-178	022-483-065	1	258.12	15.00	273.12
99-179	022-483-066	1	258 12	15.00	273 12
99-180	022-483-067	1	258.12	15.00	273 12
99-181	022-483-068	1	258 12	15.00	273 12
99-182	022-483-069	1	258 12	15.00	273.12
99-183	022-483-070	1	258.12	15.00	273 12
99-184	022-483-071	1	258.12	15.00	273.12
TOTAL		347	\$89,567.64	\$5,205.00	\$94,772.64

METHOD OF APPORTIONMENT

Diamond Ridge Parks and Open Space Maintenance Assessment District No. 1 (Miravale, Phase I)

The District is assessed, on the basis of total development units generated, for the maintenance and operation of the Diamond Ridge Parks and Open Space Maintenance Assessment District No. 1 including incidentals and appurtenances and shall include all the costs of maintaining and/or operating the improvements described herein.

GENERAL RULES

1. All costs associated with the maintenance and operation of the Diamond Ridge Parks and Open Space Maintenance Assessment District No. 1 improvements including Engineer's Report, printing and advertising of assessment notices and legal fees shall be spread to all parcels on a pro rata development unit basis.
2. Part 2 of Division 15 of the Streets and Highways Code, the Landscaping and Lighting Act of 1972, permits the establishment of assessment districts by agencies for the purpose of providing certain public improvements which include the operation, maintenance and servicing of landscaping, street lighting, and park and recreational facilities. Section 22573 of the Landscaping and Lighting Act of 1972 requires that maintenance assessments be levied according to benefit rather than according to assessed value. In addition, Article XIIIID, Section 4(a) of the California Constitution limits the amounts of any assessment to the proportional special benefit conferred on the property

Article XIIIID provides that publicly owned properties must be assessed unless there is clear and convincing evidence that those properties receive no special benefit from the assessment.

Excepted from the assessment would be the areas of public streets, public avenues, public lanes, public roads, public drives, public courts, public alleys, public easements and right-of-way, public greenbelts and public parkways, and that portion of public property that is not developed and used for business purposes similar to private commercial, industrial, and institutional activities.

With the exception of the proposed retention pond/park in Parcel "A", the improvements to be maintained and operated as a result of the formation of Diamond Ridge Parks and Open Space Maintenance Assessment District No. 1 are to be installed simultaneously with the development of residential units within the District. Once Parcel "A" retention pond/park improvements are accepted, the full assessment will be collected from all developed parcels in proportion to the special benefit derived by each parcel. All such improvements are being installed within or in areas in close proximity to the proposed developed residential lots.

As a result of the foregoing, the developed residential lots in Diamond Ridge (Miravale, Phase I) will receive 28.161% of the special benefits of the operation and maintenance of parks, public landscaping and street lights, with future Diamond Ridge, Phases II and III receiving approximately 71.839%. These special benefits include enhanced neighborhood identity and quality of life, generated when park landscaping and lighting are in place, improved, operable, safe, clean and maintained. In short, maintenance and operation of the proposed improvements will provide beautification, shade, and increase the desirability of the immediate surroundings of the residential units within the District.

Due to the configuration and proximity of the District landscaping and lighting improvements in relation to the developed lots, and the timelines for constructing the improvements, undeveloped lots in close proximity to the District (Phases II and III of the Diamond Ridge Subdivision and future residential/commercial development south of Gabilan Drive between Parcel "A" and Orchard Lane) will not enjoy special benefits described herein at this time. Moreover, because of the location of the contemplated improvements either within or close to the District itself, there is no general benefit to properties outside the District or the community as a whole, or a general benefit that is so negligible, it cannot be calculated for purposes of assessment.

As such, all costs associated with the maintenance and operation of Diamond Ridge Parks and Open Spaces Maintenance District No. 1 improvements, including incidentals and appurtenances, shall be spread to all parcels within the District on a development unit basis. Developed parcels are those parcels on which a final subdivision map has been filed, and which can obtain building permits as of the date of the final hearing on assessment. Said parcels also abut or obtain primary access from a public street.

3 In order to determine the appropriate assessment for each developed parcel, a budget for operation and maintenance costs associated with planned improvements in the entire Canyon Creek Subdivision Project was prepared. Since not all of the improvements to be operated or maintained within the subdivision will be constructed simultaneously with the development of residential lots within the District, to the extent applicable, costs in the District have been pro-rated to reflect the District's proportionate share of operation and maintenance costs. In some instances, the total cost of operation and maintenance of a given improvement must be collected on an annual basis. Since the developed parcels in the District are the only parcels that derive special benefit from such activities, they initially must bear the entire cost of operation and maintenance. It is anticipated that assessments levied in this manner will be decreased as subsequent portions of the Subdivision either are added to the District or form separate Parks and Open Spaces Districts benefiting from the operation and maintenance of such improvements.

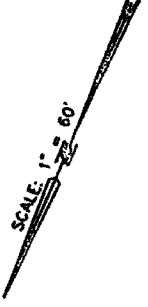
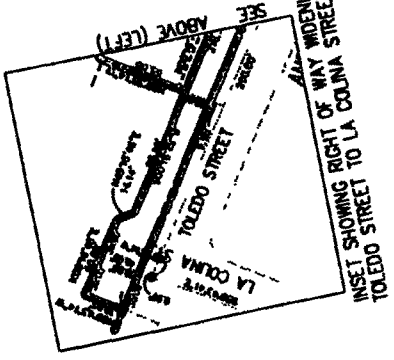
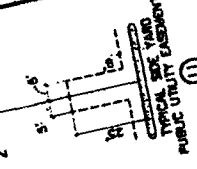
4 Factored development unit calculations for residential areas are as follows:

Low Density Single Family Residential	=	1.0 Unit
Future Medium Density Residential	=	0.8 Unit

5 In addition to a City fee for annual administration of the District, all assessed parcels shall be assessed an additional \$15.00 for processing the annual assessments through the County Auditor/Controller.

- 6 All assessments shall be adjusted annually based on a comparison of the Consumer Price Index of the San Francisco-Oakland-San Jose area for the previous year/month to the Consumer Price Index for the year/month assessments are determined in the future. The benchmark month is April.

DISTRICT DIAGRAM
Diamond Ridge Parks and Open Space
Maintenance Assessment District No. 1
(Miravale, Phase I)

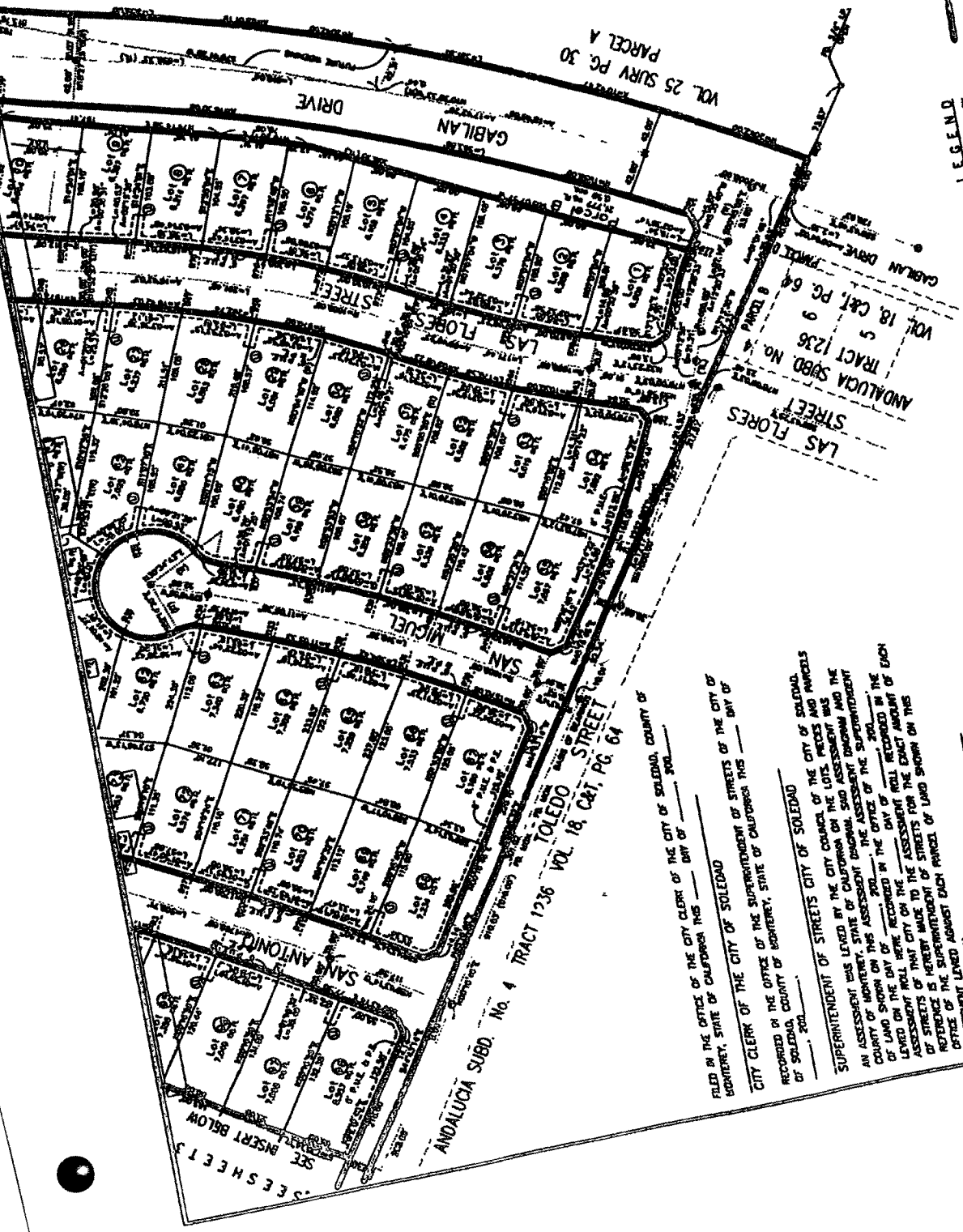


ASSESSMENT DIAGRAM
FOR
DIAMOND RIDGE PHASE 1
PARKS & OPEN SPACES
MAINTENANCE ASSESSMENT
DISTRICT

MARK THOMAS & COMPANY, INC.
ASSESSORS
10000 W. 10TH STREET, SUITE 100
DENVER, COLORADO 80202
TELEPHONE: (303) 751-1000
FAX: (303) 751-1001
WWW.MTK.COM



LEGEND
PROPERTY BOUNDARY
ASSESSMENT NUMBER



THE UNDERSIGNED COUNTY AUDITOR OF THE COUNTY OF
MONTREY HEREBY CERTIFIES THAT A CERTIFIED COPY OF THIS
ASSESSMENT DIAGRAM AND THE ASSESSMENT ROLL 2001
FILED IN MY OFFICE THIS _____ DAY OF _____

COUNTY AUDITOR
COUNTY OF MONTREY

FILED IN THE OFFICE OF THE CITY CLERK OF THE CITY OF SOLEDAD, COUNTY OF
MONTREY, STATE OF CALIFORNIA THIS _____ DAY OF _____ 2001
CITY CLERK OF THE CITY OF SOLEDAD

RECORDED IN THE OFFICE OF THE SUPERINTENDENT OF STREETS OF THE CITY OF
SOLEDAD, COUNTY OF MONTREY, STATE OF CALIFORNIA THIS _____ DAY OF _____
2001.

SUPERINTENDENT OF STREETS CITY OF SOLEDAD
AN ASSESSMENT HAS BEEN MADE BY THE CITY COUNCIL OF THE CITY OF SOLEDAD,
COUNTY OF MONTREY, STATE OF CALIFORNIA ON THE LOTS, PLOTS AND PARCELS
SHOWN ON THIS ASSESSMENT DIAGRAM AND THE ASSESSMENT ROLL 2001 AND THE
ASSESSMENT ROLL 2001 HAS BEEN RECORDED IN THE OFFICE OF THE SUPERINTENDENT
OF STREETS OF THE CITY OF SOLEDAD, COUNTY OF MONTREY, STATE OF CALIFORNIA
ON THE _____ DAY OF _____ 2001.
THE AMOUNT OF THE ASSESSMENT FOR EACH PARCEL OF LAND SHOWN ON THIS
ASSESSMENT ROLL IS HEREBY MADE TO THE ASSESSMENT ROLL RECORDED IN THE
OFFICE OF THE SUPERINTENDENT OF STREETS OF THE CITY OF SOLEDAD, COUNTY OF
MONTREY, STATE OF CALIFORNIA.

COUNTY RECORDER DEPUTY
BY _____

